

**32 07122A50**

**32 07323A40**

**32 07222A50**

**Single-phase rectifiers**  
with internal EMC-circuit

The half-wave and bridge-connected rectifiers of type series 32 07.2.A are particularly suitable for the operation of electromagnetic clutches and brakes and of other electromagnetic devices operated from an alternating-current mains supply.

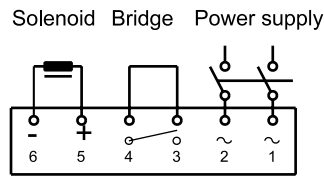
The 32 0722.A range was specially designed for installation in the terminal box of electric motors. The combination of stranded leads and screw terminals is the ideal arrangement for connections both to the motor terminal board and to the brake. The 32 0732.A range has only screw terminals. These rectifiers are intended for installation in separately-switchable electromagnets, clutches and brakes. The 32 0712.A rectifiers are cast in resin and are provided with stranded connection leads. To reduce reaction time, the rectifiers in this range can also be switched on the direct-current side. Optional are rectifiers with internal limiting of the switch of pulse-voltage available.

**CE**

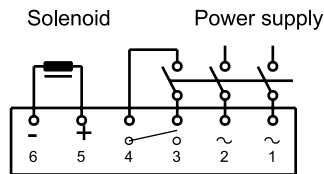
These products comply with the EMC-directive 89/336/EWG. The devices are conform to the following standards:  
EN 55011 (1992)  
all types  
group 1, class A (redionoise-voltage)  
group 1, class B (radionoise-radiation)  
only types 32 07.23A40 and -50:  
group 1, class B (radionoise-voltage)  
all types  
EN 61000-4-3 (1997) level 3,  
EN 61000-4-4 (1996) level 3,  
EN 61000-4-5 (1996) level 3

**Connecting diagrams**

Normal switching:



Fast response switching:



Caution!  
Switching on the DC side must be accompanied by switching on the AC side.

**Mounting accessories**

The clips and straps are to be attached to the rectifiers by means of a dovetail key to allow certain freedom of movement.

Clip: 32 07322A00101  
Mounting clip for holes with a diameter of 4,3 mm  
1 or 2 clips required for each rectifier.

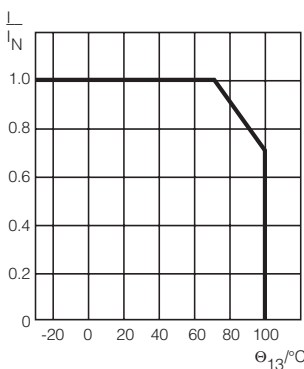
Strap \*): 32 07322A00102  
Mounting strap with 4,2 mm diameter hole for screw mounting horizontally or vertically. Alternatively, mounting can be effected with the aid of the open ended slots (see dimensions)  
1 or 2 straps required for each rectifier.

Mounting-rail clip\*): 32 07322A00103  
Mounting clip for 35 mm and 15mm mounting rails in accordance with EN50022 and EN50045  
1 or 2 clips required for each rectifier.

Self-adhesive pad: 32 07322A00104  
Pad with adhesive on both sides for mounting on smooth surfaces.  
1 pad required for each rectifier.

**Technical data**

**Maximum current loading at ambient temperatur**



Types 32 0712.A, 32 0722.A, 32 0732.A

Type	Rectifier type	max. rated input voltage $U_1$ / VAC (40-60 Hz)	Output voltage $U_2$ / VDC	max. output current		Mounting attitude	Connections
				R-Load I/ADC	L-Load I/ADC		
Existing standard types							
<b>32 07222A50</b>	half-wave	500 (+10%)	$U_1 \cdot 0.445$	1.6	2	Upright	Leads 0.5 mm <sup>2</sup> Terminals 1.5 mm <sup>2</sup>
<b>32 07223A50</b>	bridge	400 (+10%)**	$U_1 \cdot 0.89$	1.6	2	Upright	Leads 0.5 mm <sup>2</sup> Terminals 1.5 mm <sup>2</sup>
<b>32 07322A40</b>	half-wave	500 (+10%)	$U_1 \cdot 0.445$	1.6	2	Horizontal	Terminals 1.5 mm <sup>2</sup>
<b>32 07323A40</b>	bridge	400 (+10%)**	$U_1 \cdot 0.89$	1.6	2	Horizontal	Terminals 1.5 mm <sup>2</sup>

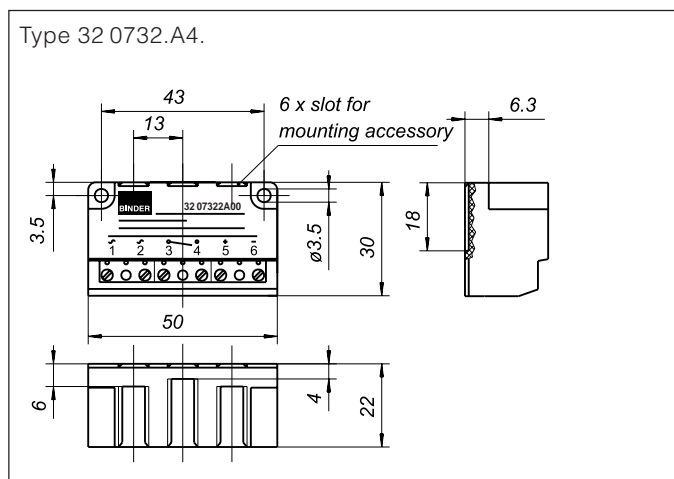
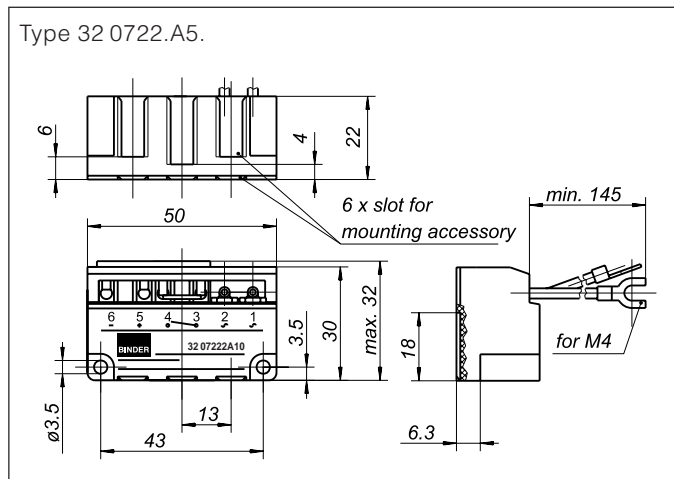
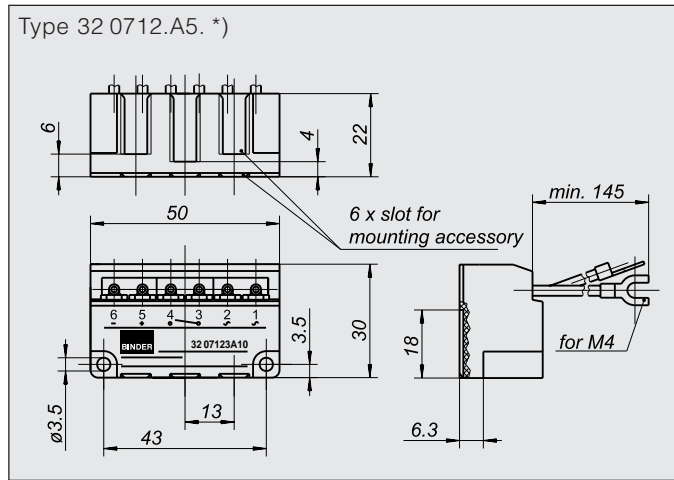
Other versions with different voltages, currents, connection and mounting variations on enquiry

\*) only on enquiry    \*\*) also 415VAC + 6%

**Degree of protection** in accordance with EN60529:IP00  
**The right is reserved to modify details without prior notice.**  
**Please observe the order data!**

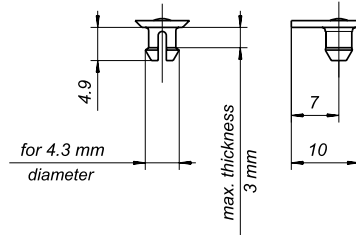
# 32 0712.A / 32 0722.A / 32 0732.A

## Dimensions (mm)

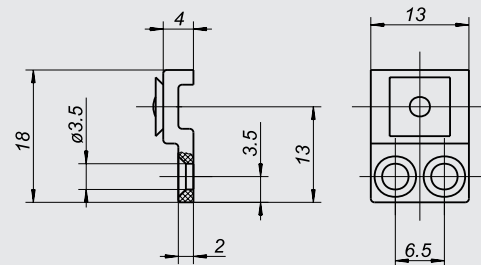


## Mounting accessories

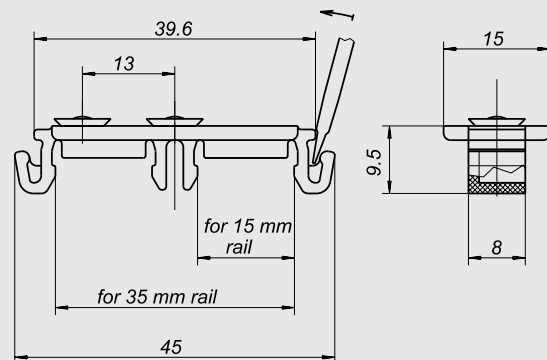
### Clip



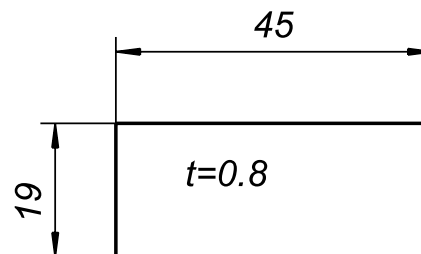
### Strap \*)



### Mounting-rail clip \*)



### Adhesiv pad



\*) only on require

**Kendrion Binder Magnete GmbH**  
 Mönchweilerstraße 1  
 D-78048 Villingen-Schwenningen  
 P.O.Box 1220 (Postal code 78002)  
 Telephone +49 / 77 21 / 877-0  
 Telefax +49 / 77 21 / 877 359

**Order example** Half-wave rectifier  
 32 07322A40  
 with Clip 32 07322A00101  
 (or as detailed in table)