

32 17320A00
32 17221A00

32 17220A Product Specification 32 17221A 32 17320A 32 17321A

Single-phase overexcitation rectifier

Characterized by their compact design, single-phase overexcitation rectifiers of the 32 17x2xA.. series are designed for installation in motor, brake or magnet terminal boxes. They are specially suitable to provide optimized operation of brakes and magnets rated for low or medium power.

Overexcitation rectifiers change over from bridge rectification to half-wave rectification after a fixed overexcitation time. Depending on the load rating, this allows the switching behaviour to be improved or the power to be reduced. Various mounting and

connection features and accessories make these rectifiers suitable for equally varied applications as the 32 x7x2xA.. series. All series are equivalent in terms of their mechanical design and connection features and thus fully interchangeable.

Technical data

Rectifier type				Time controlled change over from bridge to half-wave		
Output voltage during overexcitation (V -)				$0.89 \cdot U_i - 8\%$		
Output voltage during holding operation (V -)				$0.445 \cdot U_i$		
Recovery time t_R (s)				t_{oe}		
Type	Rated input voltage (tol.: $\pm 10\%$) V_1 (40 – 60 Hz) $V1 \sim$	Max. holding current output at		Overexcitation time *) (tol.: $\pm 30\%$) t_{oe} (s)	DC side switching option	Connections
32		Resis- tive load I (A-)	Induc- tive load I (A-)			
17221A00	220 – 415	0.8	1.0	0,3	no	2 strands 0,34 ² 2 terminals 1.5 ²
17221A03	110 – 230	1.2	1.5	0,3	no	2 strands 0,34 ² 2 terminals 1.5 ²
17320A00	220 – 415	0.8	1.0	0,3	yes	6 terminals 1.5 ²
17320A03	110 - 230	1.2	1.5	0,3	yes	6 terminals 1.5 ²
17320A23	110 - 230	1.2	1.5	1,3	yes	6 terminals 1.5 ²

*) other overexcitation times upon request

Accessories

Using a dovetail keyway, the clips or straps are to be connected with the rectifier in such a way that a flexible installation is ensured.

Clip: 32 07322A00101
Mounting clip for bores with a diameter of 4.3 mm
1 or 2 clips per rectifier

Strap *): 32 07322A00102
Mounting strap with a bore diameter of 4.2 mm for vertical or horizontal screwed mounting. Alternative: installation in retention grooves.

(see dimensions)
1 or 2 straps per rectifier

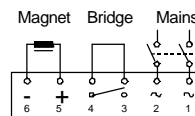
Mounting rail clip *): 32 07322A00103
Mounting clip for 35 and 15 mm mounting rails in accordance with EN 50022 and EN 50045
1 or 2 clips per rectifier

Adhesive pad *): 32 07322A00104
Double-sided adhesive tape for mounting on smooth surfaces
1 pad per rectifier

*) upon request

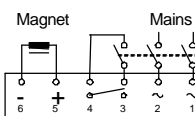
Connection diagrams

Normal switch-off time:



Reduced switch-off time:

Attention!
In case of DC side switching, AC side switching is also required. Rectifier types offering DC side switching option are indicated in the table.



CE

These products meet the requirements of the **EMC Directive 89/336/EEC**. Compliance with the following standards is confirmed: EN 55011 (VDE 0875, part 11, 1992)

Group 1, class B
disturbance voltage
Group 1, class B
disturbance radiation
DIN EN 61000-4-3 (1997)
test severity level 3,
DIN EN 61000-4-4 (1996)
test severity level 3,
DIN EN 61000-4-5 (1996)
test severity level 3

The products comply with the **Low Voltage Directive 73/23/EEC**.

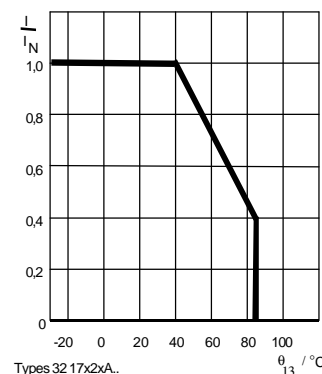
Compliance with the following standards is confirmed: HD 625.1 S1 (1996)
EN 60529 (1991)
The products are considered components in the sense of the **Machinery Directive 98/37/EEC** and are not to be used until the machine in which they are to be incorporated is declared to conform to the requirements of the EC Directives.

Protection type:
as per EN 60529: IP00

**Specification subject to
modifications without notice!**

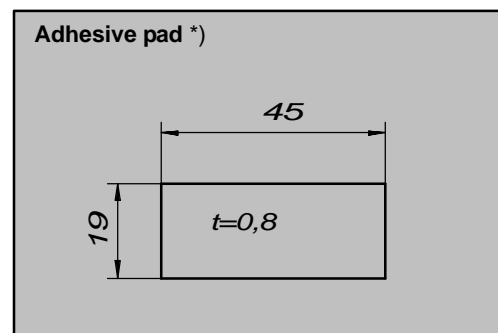
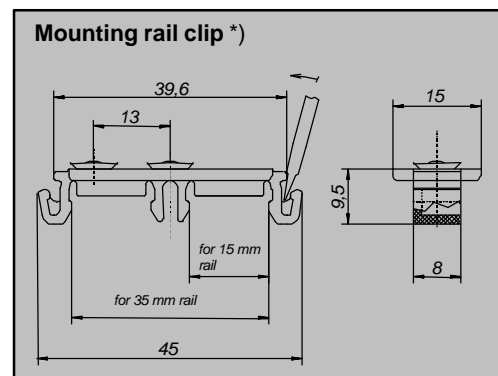
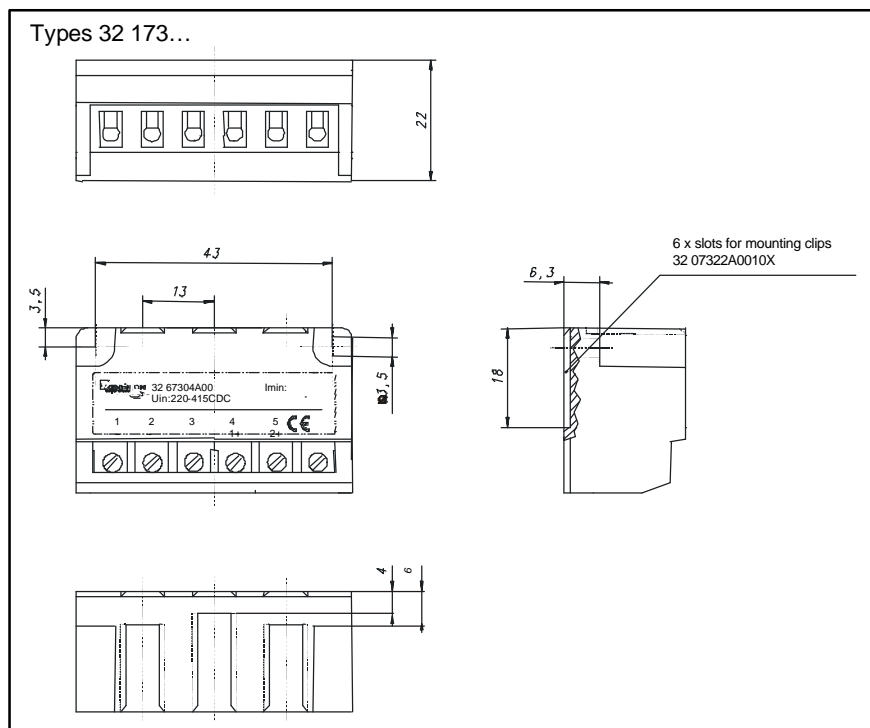
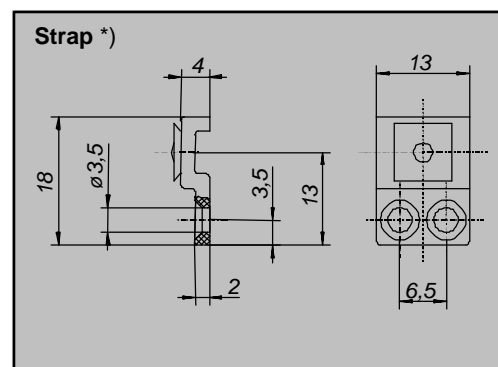
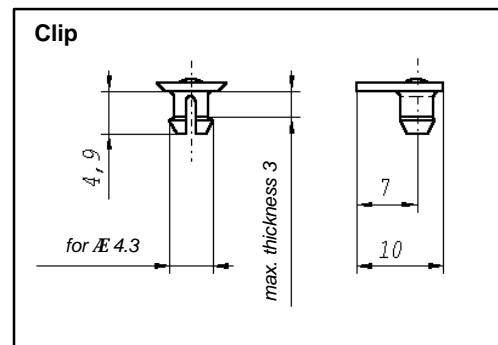
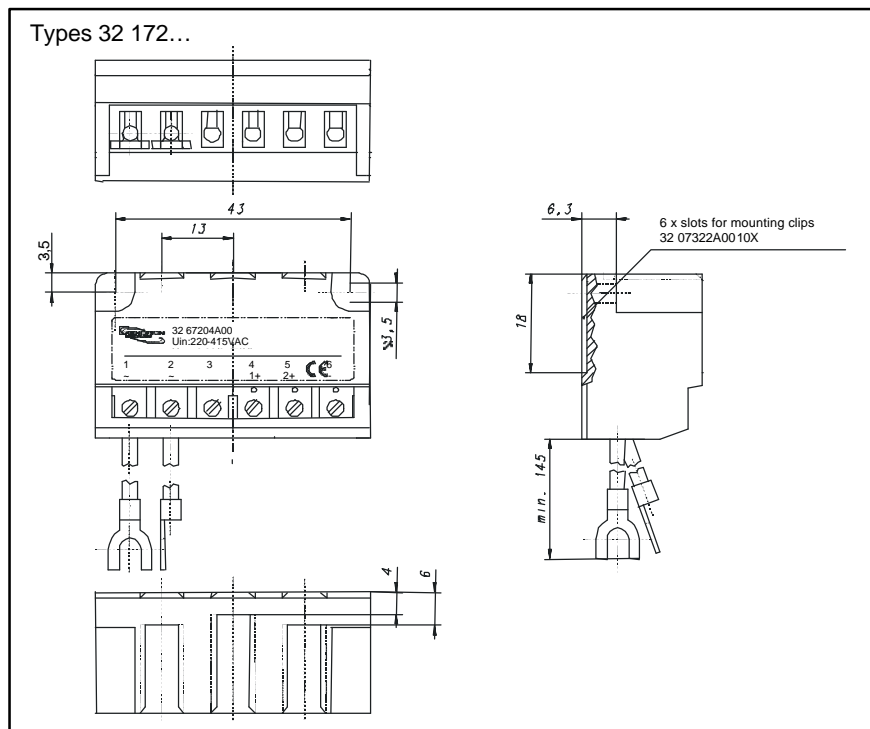
**Please observe ordering
data!**

Admissible current load at ambient temperature



32 17220A / 32 17221A / 32 17320A / 32 17321A

Dimensions (mm)



*) upon request

Kendrion Binder Magnete GmbH
Plant:
Mönchweilerstraße 1
D-78048 Villingen-Schwenningen
Mailing address:
Postfach 1220
D-78002 Villingen-Schwenningen
Phone: +49 (0)7721 877-0
Fax: +49 (0)7721 877-348

Ordering example

2 = leads / terminals
3 = terminals
0 = DC side switching option
1 = only AC side switching
0 = toe 300ms
2 = toe 1,3s
0 = 220 - 415 VAC
3 = 110 - 230 VAC

Overexcitation rectifier

32 17 2 A