



32 23424 and 28 H
for Direct Mounting

Single Phase Rectifier Units

for A.C. Rectification to 24 Volts D.C.
for direct Mounting

These Single Phase Transformer/ Rectifiers embody transformer unit and Bridge connected rectifier network. The units convert A.C. mains input to 24 volts D.C. output, one side of which is at earth and potential free.

The transformer, rectifier and transient voltage protection elements are totally encapsulated within a Pressure Die-cast case and are fully protected against ingress of dust or moisture.

These units do not embody protective fuses, therefore overload protection must be catered for in the external circuitry.

Rectifiers Type 32 234 . . H are primarily designed for direct mounting onto brake units etc, they can however also be adapted for free standing applications. When directly mounted onto equipment the operating ambient temp. must not exceed 35°C, whereas, when free standing an ambient temp. of 40°C is permissible.

Protection to EN 60529: IP 65, if bore ① is tightened.

Insulation Class: E
to VDE 0550/12.69 Part 1, Para 13.

Units have two Input tappings U_1 and U_2 for voltage ranges listed.

Standard Operating Voltage Ranges

Single Phase 40 to 60 Hz

| Input Voltage Connections | | |
|---------------------------|-----------------|-----------------|
| Type | U_0 and U_1 | U_0 and U_2 |
| H0073 | 115 - 130 V | 220 - 240 V |
| H0074 | 380 - 420 V | 440 - 480 V |
| H0071 | 500 - 540 V | 550 - 600 V |

Subject to alteration

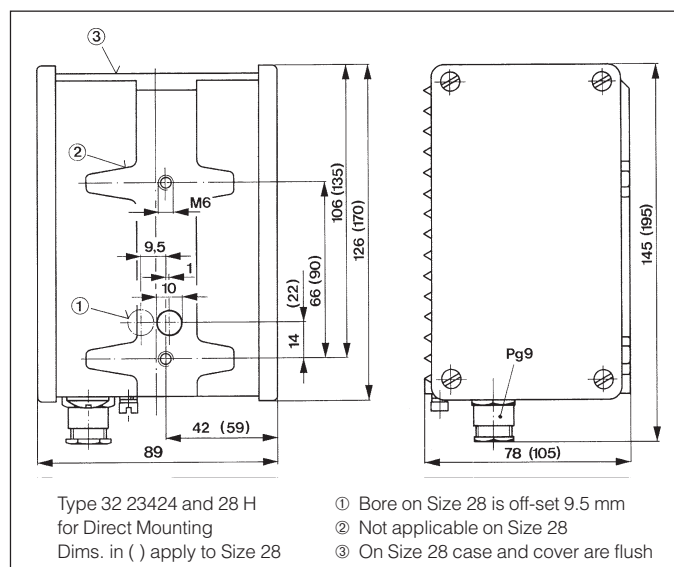
CE

These devices comply with low voltage directive 73/23/EWG. They are manufactured and tested according to EN60742 (1989) (DIN VDE 0551 Part1, 09.1989).

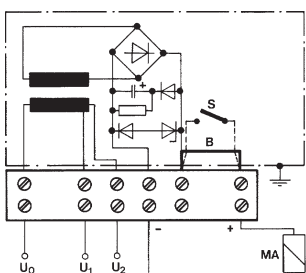
Technical Data

| Size | Output D.C. Voltage V | Output D.C. Current A | Output Power W | Rated Power VA | Weight kg |
|------|-----------------------|-----------------------|----------------|----------------|-----------|
| 24 | 24 | 1.2 | 29 | 39 | 1.8 |
| 28 | 24 | 3.0 | 72 | 100 | 3.3 |

Dimensions (mm)



Connection Diagramm



For D.C. control (Fast Response) remove bridge B and switch via external aux. contacts.

Kendrion Binder Magnete GmbH
Mönchweilerstraße 1
D-78048 Villingen-Schwenningen
P.O.Box 1220 (Postal code 78002)
Telephone +49 / 77 21 / 877-0
Telefax +49 / 77 21 / 877 348

Ordering example

Single Phase Rectifier Unit

32 234 . . H00 . .

size see table

voltage see table